



Osprey Flight Solutions

# A new age for aviation risk management

Osprey:Pulse Integration Guide



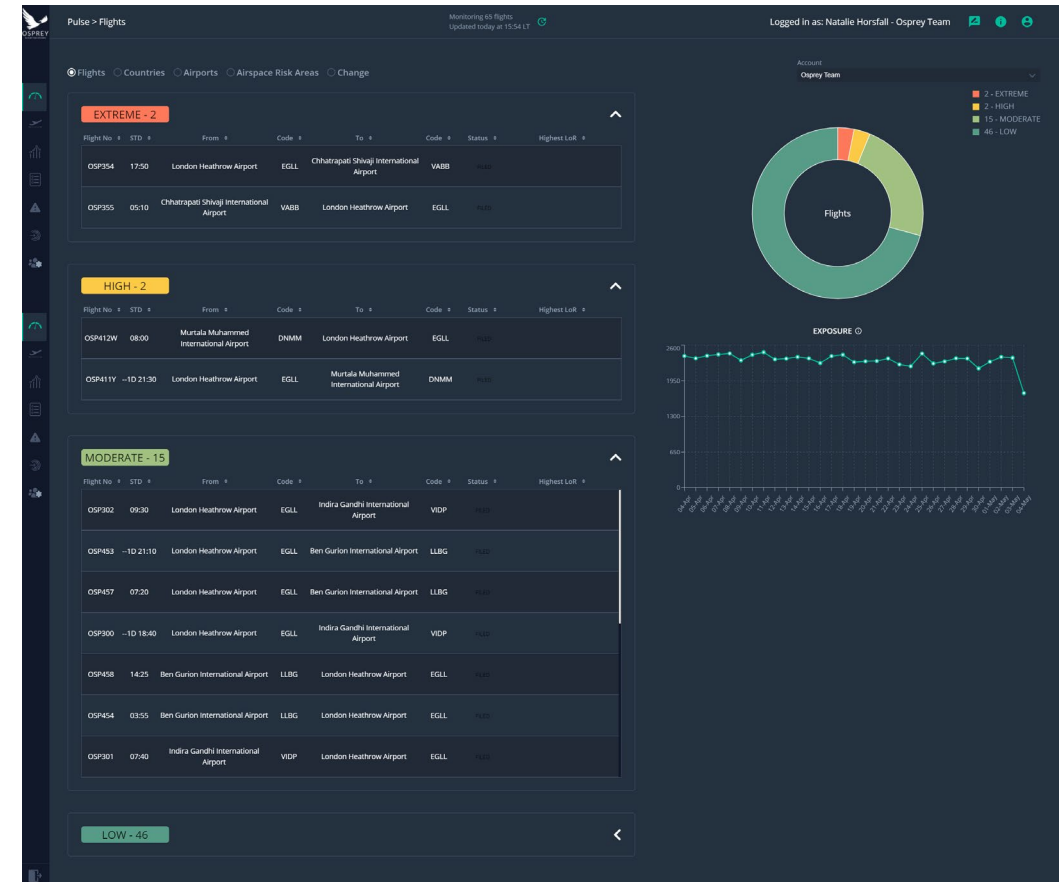


# :Pulse Integration Instructions

## What is required?

To help you get the most out of our system and ensure we receive, and risk assess all your flight plans, we require:

- Our AFTN address – [EGNJXHAB](#) – to be added when filing your flight plans.
- A list of all your operator code(s), so we can track all filed flights.
- Adding this AFTN to the operator's key hubs at both Departure and Arrival points will ensure we receive most of the operations. However, for full coverage, this should be added to all endpoints and **all** message types – Delays/ Cancellations etc.





Osprey Flight Solutions

# A new age for aviation risk management

If you have any further questions, please contact your CSM

