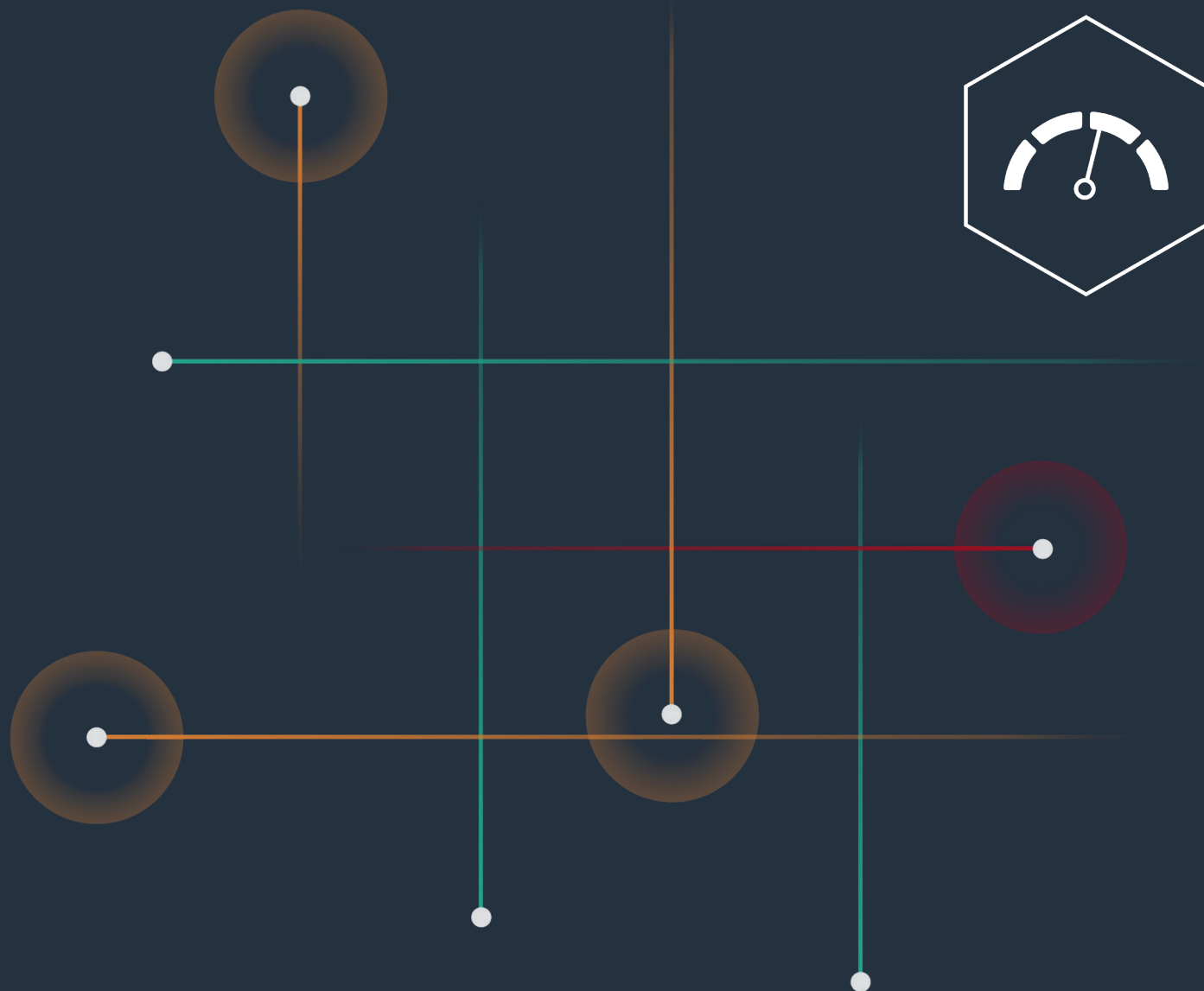




Osprey:Pulse Training Guide



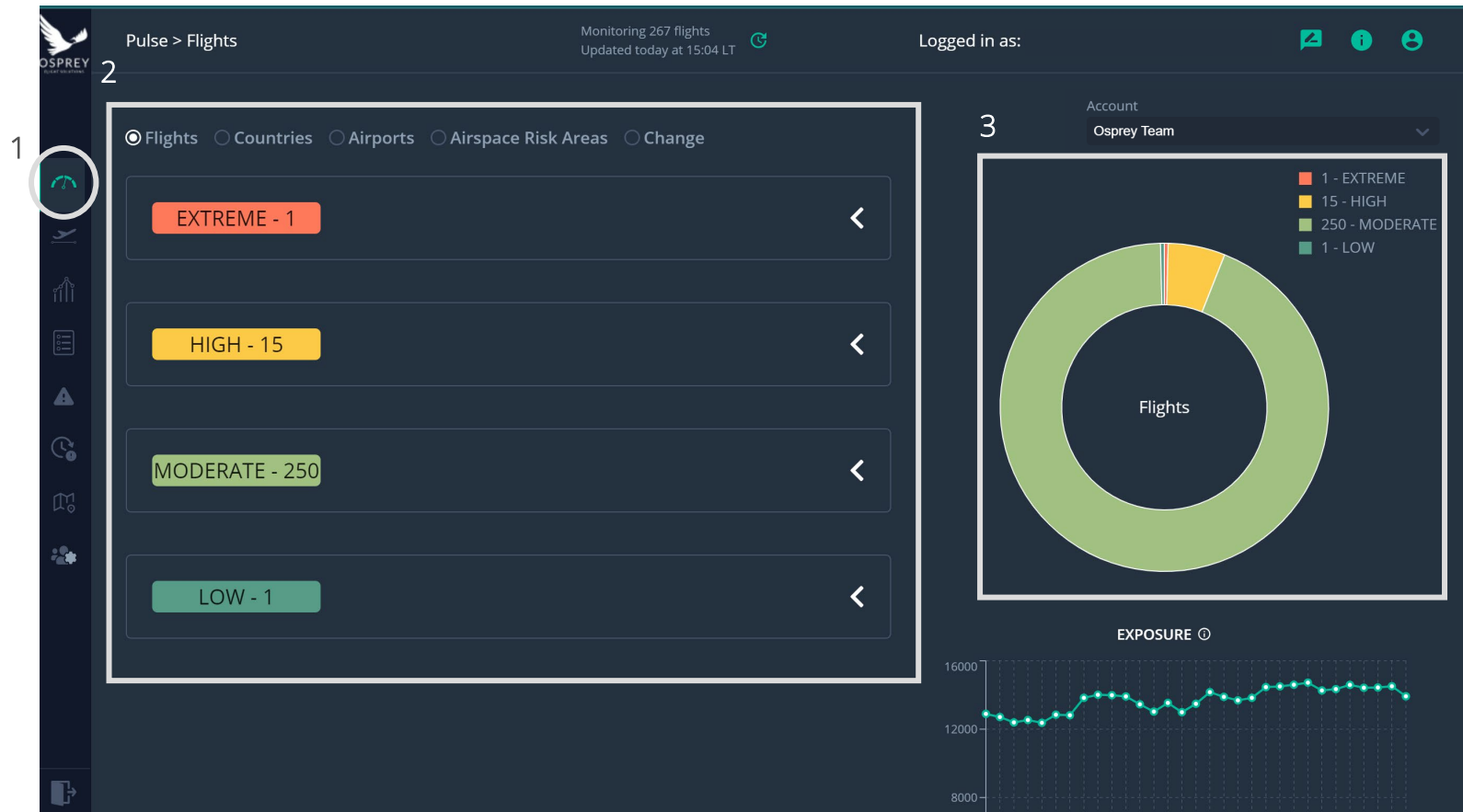


How to: Use Osprey:Pulse

Osprey:Pulse: The intuitive dashboard enables you to monitor your entire flight board and understand instantaneously when risk levels change. :Pulse will categorise all your flights into different risk levels so security and operations teams can quickly identify which flights fall into which risk categories.

How to use the :Pulse dashboard

1. Go to the :Pulse dashboard icon down the left-hand side of the screen to view all assessed flights.
2. Choose risk type (flights, countries, airports, airspace) and view the relevant data split into 4 categories (low, moderate, high, extreme).
3. Pie chart breakdown of all flights and their risk ratings.





How to: View your Risk Changes

Pulse > Flights

Monitoring 42 flights
Updated today at 14:21 LT

Flights Countries Airports Airspace Risk Areas Change

EXTREME - 7

Flight No	STD	From	Code	To	Code	Status	Highest LoR	Report
OFS-793	12:57	Heydar Aliyev International Airport	UBBB	Brunei International Airport	WBSB	AIRBORNE	Iran - Northern Territory	
OFS-377	-1D 04:55	Beijing Capital International Airport	ZBAA	Hamad International Airport	OTHH	FILED	Iran - Northern Territory	
OFS-718	20:05	Abu Dhabi International Airport	OMAA	Allama Iqbal International Airport	OPLA	FILED	Iran - Southern Territory	
OFS-647	-1D 15:35	Lehigh Valley International Airport	KABE	Jizan Regional Airport	OEGN	FILED	Saudi Arabia - Southwest Provinces	

2. To view all changes click on the icon (or select changes from the options) to view the details of the changes, in date order, showing the flights affected and the type of Alert.

How to view your flight risk changes

1. If one of your flight's risk scores has changed it will appear as an alert notification here on the dashboard.

Flights Countries Airports Airspace Risk Areas Change

Cause Effect

Alert	Date	Description	Number of flights
⚠	2020-12-04	Indira Gandhi International Airport: Airport staff arrested for facilitating gold smuggling from UAE	3
⚠	2020-12-04	Southwest Provinces: Saudi-led coalition shoots down Yemeni Houthi rebel drone	4
⚠	2020-12-03	Germany issues AIC to replace conflict zone hazardous airspace notification NOTAMs	20
⚠	2020-12-03	Athens Airport: Network trafficking migrants to Central Europe using forged documents disrupted	1
⚠	2020-12-03	COVID-19: Vietnam and Cambodia report first outbreaks in months as more vaccine distribution deals come to fruition and Taiwan tightens international entry restrictions (UPDATE #38)	5
⚠	2020-12-02	Taipei: Police arrest three customs officers in connection with narcotics seizure from Hong Kong	1
⚠	2020-12-02	Robert Mugabe International Airport: Church leader, police officer arrested for currency smuggling	1
⚠	2020-12-02	COVID-19: WHO warns of worsening situation in the US, Brazil and Mexico as TSA records largest number of domestic travellers since the start of the pandemic (UPDATE #35)	12



How to: Generate Flight Reports

Flight Reports - You can also run instant risk reports on any of your flights whenever needed from the flight display dashboard.

How to use generate your flight report

1. Go to the :Pulse dashboard down the left-hand side of the screen to view all flights.
2. Find the flight you want from the dropdown and select it
3. Click the 'report' icon next to your chosen flight
4. Once the flight window pops up:
 - a) Choose template
 - b) Click the Report button to run the report
5. The report will open in a new window where you can download and save it.

The screenshot displays the Osprey Pulse dashboard. On the left, a sidebar contains navigation icons, with the 'Pulse' icon (a green circle with a white pulse line) circled in red and labeled '1'. The main area shows a 'Flight Display' window. At the top of this window, there are tabs for 'Flights', 'Countries', 'Airports', 'Airspace Risk Areas', and 'Change'. Below these, a table lists flights with columns for 'Flight No', 'Flight Number', 'Departure', and 'Destination'. The flight 'OSP303' is selected. To the right of the flight list, a 'Report' icon (a green circle with a white document icon) is circled in red and labeled '3'. The 'Flight Display' window itself shows a map of Europe and the Middle East with a flight path from London to Eindhoven. Below the map, there are tabs for 'Map', 'Summary Assessment', 'Vertical Profile', 'Alerts', and 'FIRs'. The 'Map' tab is active. At the bottom of the 'Flight Display' window, there is a 'Template' dropdown set to 'Standard Flight Risk Template' and a 'Reference' field. A 'Report' button (a green circle with a white document icon) is circled in red and labeled '4'. The bottom of the dashboard shows a list of flights, with 'OSP251' selected. The 'Report' icon next to 'OSP251' is circled in red and labeled '3'.



Osprey Flight Solutions

A new age for aviation risk management

If you have any further questions,
please feel free to contact your CSM

